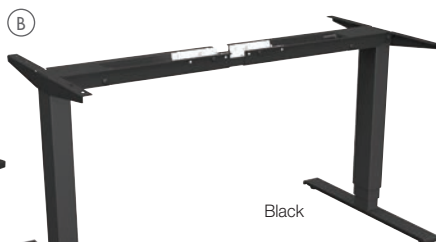




# ACTIVE OFFICE - SIT-TO-STAND WORKSTATIONS



Black



Black



Silver



Quadro Electric

## Adjustable-Height Workstations

- Adjustable-height workstations to accommodate different users
- Features digital display with memory settings for height
- New and improved design
- Alternate between sitting and standing
- Dual motor for synchronized and precise compensation for uneven loads
- Smooth quiet movement
- Adjustment speed 1.3" per second
- Built-in temperature and overload sensors
- ISP (intelligent system protection) anti-collision safety feature
- Flex Frame adjusts for 48" to 72" wide table tops
- Maximum weight capacity 275 lbs.
- Covered by Lorell Limited 5-Year Warranty



### A. Sit-To-Stand Three-Leg Base For L-Shape Desk

- A more flexible model base that allows for an L-shape desk with height-adjustable function to allow each user to create their optimum work environment
- Adjusts from 24" to 50" high
- For use with 48" - 72" tops

Product No.	Color	LIST PRICE
LLR 25946	Black	<del>1771.00 EA</del>
LLR 25949	Silver	<del>1771.00 EA</del>

### B. Sit-To-Stand Bases

- A more flexible model base that allows for a straight desktop with continuous height-adjustable function to allow each user to create their optimum work environment

Product No.	Color	LIST PRICE
Three-Tier Bases: Adjusts from 24" to 50" high. For use with 48" - 72" tops		
LLR 25945	Black	<del>1111.00 EA</del>
LLR 25948	Silver	<del>1111.00 EA</del>
Two-Tier Bases: Adjust from 27.5" to 47" high. For use with 48" - 72" tops		
LLR 25944	Black	<del>996.00 EA</del>
LLR 25947	Silver	<del>996.00 EA</del>



### C. Electric Two-Tier Sit-Stand Double Base

- Healthier approach to work in a smaller footprint
- Both sides adjust in height so you can work sitting or standing
- One side can be raised to maximum 46"H while other to the 28.3" minimum with individual control boxes
- Four-height memory for convenient operation
- Desktops and optional privacy panel divider for built-in slots sold separately
- Expands from 42½"W - 71"W for tops 48"W to 72"W sold on page 25
- **Assembly Required**



### D. Cable Management Beam

- Designed especially for Lorell Double Sit-Stand Bases
- Stylishly organizes and hides cords and cables
- Long spine protects and secures your cords
- Included screws to mount cable-management box



### E. Acoustic Privacy Panels

- Designed especially for Lorell Double Sit-Stand Bases
- Creates desktop privacy in close quarters
- Blocks noise from your co-worker
- Soundproof as well as lightweight
- Light Gray polyester fiber
- Mounting bracket included with Double Sit-Stand Base (sold separately)
- 23.6" High

	Product No.	Description	LIST PRICE
C	LLR 25959	Sit/Stand Double Base	<del>1936.00 EA</del>
D	LLR 25960	Double Base Cable Management Spine Beam	<del>307.00 ST</del>
	LLR 25961	48" Acoustic Privacy Panel	<del>189.00 EA</del>
E	LLR 25962	60" Acoustic Privacy Panel	<del>230.00 EA</del>
	LLR 25963	72" Acoustic Privacy Panel	<del>469.00 EA</del>

# ACTIVE OFFICE - SIT-TO-STAND WORKSTATIONS



Walnut



## A. Premium Knife Edge Table Tops

- Compatible with electric adjustable-height bases
- Covered by Lorell Limited 5-Year Warranty



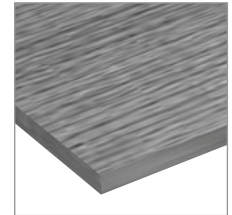
Knife Edge Detail



Weathered Charcoal

## B. Standard Table Tops With Matching PVC Edgeband

- Compatible with electric adjustable-height bases
- Covered by Lorell Limited 5-Year Warranty



Edge Detail

	Description	Product No. Mahogany	Product No. Walnut	Product No. Cherry	Product No. Espresso	Product No. Weathered Charcoal	Product No. Gray	Product No. White	Size	LIST PRICE
A	Premium Knife Edge Table Tops	LLR 59613‡	LLR 59614‡			LLR 59656‡			72"W x 30"D	256.00 EA
		LLR 59615‡	LLR 59616‡			LLR 16222			60"W x 30"D	225.00 EA
		LLR 59611	LLR 59612			LLR 16223			60"W x 24"D	184.00 EA
		LLR 59609	LLR 59610						48"W x 24"D	153.00 EA
B	Standard Table Tops With Matching PVC Edgeband	LLR 34405‡	LLR 34407‡	LLR 34406‡	LLR 34408‡	LLR 16198	LLR 62560‡	LLR 62559‡	72"W x 30"D	254.00 EA
		LLR 59607‡	LLR 59632‡	LLR 59631‡	LLR 59633‡	LLR 16199	LLR 62598‡	LLR 62597	72"W x 24"D	209.00 EA
		LLR 16200	LLR 16242		LLR 18231‡	LLR 16201	LLR 62558‡	LLR 62557‡	60"W x 30"D	209.00 EA
		LLR 59605	LLR 59635	LLR 59634	LLR 59636	LLR 16202	LLR 62596	LLR 62595	60"W x 24"D	182.00 EA
		LLR 59603	LLR 59638	LLR 59637	LLR 59639	LLR 16203	LLR 62594	LLR 62593	48"W x 24"D	140.00 EA

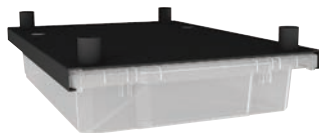


## C. Universal Keyboard Tray

- Mounts under your desk with included hardware
- 10 $\frac{3}{8}$ "W x 28 $\frac{1}{2}$ "D x 5"H
- Covered by Lorell Limited 5-Year Warranty



Product No.	Color	LIST PRICE
LLR 99543	Black	150.00 EA



## D. Hanging Bin Kit

- Mounts under your desk to create supply storage
- Pull-out bins allow you to transport supplies or trade bins with other work stations
- 14"W x 18"D x 4"H
- Covered by Lorell Limited Lifetime Warranty



Product No.	Color	LIST PRICE
1" Risers		
LLR 00058	Clear	113.00 EA
2" Risers		
LLR 00057	Clear	113.00 EA



## E. Universal Cable Control Spine

- Routes cables from desk to floor
- Covered by Lorell Limited 5-Year Warranty



Product No.	Size	LIST PRICE
LLR 49259	2" x 33"	35.00 EA
LLR 49260	2" x 35 $\frac{1}{2}$ "	41.00 EA



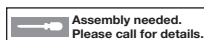
## F. Mobile Power Tower

- Includes eight AC outlets and eight USB outlets (two on each of four sides)
- Three-prong plug
- Durable steel frame includes a cord winder for 10' power cable
- Four lockable wheel casters
- 15 $\frac{3}{4}$ "W x 15 $\frac{3}{4}$ "L x 43 $\frac{1}{4}$ "H



Product No.	Color	LIST PRICE
LLR 34000	Silver	600.00 EA

**⚠ WARNING:** Cancer and Reproductive Harm – www.P65Warnings.ca.gov



‡Cannot be shipped UP

# ACTIVE OFFICE - SIT-TO-STAND WORKSTATIONS



## A. Three-Screen DLX LT-Touch Riser

- Light touch 123 height-adjustable workstation is the easiest and most ergonomic sit/stand workstation
- Transforms any fixed-height desk into an active healthy workplace and does it with style
- Offers a weightless height adjustment (up to 19" above your desk) that effortlessly moves your tray and monitor arm to the most comfortable positions
- Monitors have an additional 4.5" of vertical adjustability so you can have the ideal sitting and standing positions
- Includes the flexibility and components to handle one extra-large, two up to 27" or three up to 24" monitors, up to 24 lbs.
- Aluminum alloy construction with cable management and USB charging port included

Product No.	Color	LIST PRICE
27"W x 26"D x 36"H		
LLR 03167	Black	899.00- <del>EA</del>



## B. Large Monitor Riser

- Riser allows you to go from sitting to standing with ease
- Stop at any position from 5½" x 19¼"
- Gas-spring monitor lift for smooth, easy ascension
- 23¼" x 12¾" keyboard tray tilts between negative 5 and positive 15° and offers a 20mm height-adjustment range
- Sturdy steel X-frame
- Worksurface and tray are made of medium-density fiberboard with PVC finish
- Weight capacity 33 lb.
- Keyboard tray weight capacity 4.4 lb

Product No.	Color	LIST PRICE
35¼"W x 19¼"D x 19½"H		
LLR 99555‡	Black	422.00- <del>EA</del>



## C. Adjustable-Height Mobile Desks

- Laminate top laptop caddy includes an iPad holder and cup/pencil holder
- Steel tube aluminum base with powder coat finish
- Height adjusts using gas lift
- Four casters, two with brakes for mobility
- 28¼"W x 18¾"D x 41"H
- Covered by Lorell Limited 5-Year Warranty



Product No.	Color	LIST PRICE
LLR 84838	Silver/Black	599.00- <del>EA</del>

**⚠ WARNING:** Cancer and Reproductive Harm – [www.P65Warnings.ca.gov](http://www.P65Warnings.ca.gov)



## D. Adjustable-Height Mobile Standing Desk

- Complete sit-to-stand desk is mobile
- Rises from 31" to 49"
- 40"W top can hold two monitors
- Full size retractable keyboard tray 40" x 11½", sits 4½" below desk
- Grommet hole for a monitor arm or cables
- Includes locking casters and feet
- Functions as a mobile workstation, game platform or desk extension
- 40"W x 21"D x 49"H
- Covered by Lorell Limited 5-Year Warranty



Product No.	Color	LIST PRICE
LLR 82016	Black	679.00- <del>EA</del>

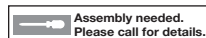


## E. Active Office Exercise Bike

- Work while exercising with workstation that features an exercise bike
- Liquid-crystal display resistance
- Height-adjustable work surface
- Includes cup holder and monitor display
- 20¾"W x 28¾"L x 40"-49"H

Product No.	Color	LIST PRICE
LLR 99531	Gray/White	847.00- <del>EA</del>

**⚠ WARNING:** Cancer and Reproductive Harm – [www.P65Warnings.ca.gov](http://www.P65Warnings.ca.gov)



‡ Cannot be shipped UP



# ACTIVE OFFICE - SIT-TO-STAND WORKSTATIONS



Black with  
Single Monitor



White with  
Dual Monitor Bracket



## A. EMotion Electric Desk Risers With Keyboard Tray

- Electric sit-to-stand desk riser adjusts up and down with the press of a button
- Adjust work surface from 4 3/8" to 21 1/8" off of the work surface
- Features stylish design, laminate top panel and keyboard tray
- Black powder coat aluminum base
- Includes single monitor arm and bracket
- Optional dual monitor bracket sold separately
- Covered by Lorell Limited 5-Year Warranty



Product No.	Color	LIST PRICE
25 1/2"W x 15"D x 4 3/8"-21 1/8"H, Shpg. Wt. 49 lbs.		

LLR 99548	Black	<b>816.00-<del>EA</del></b>
-----------	-------	-----------------------------

Dual Monitor Bracket: 6 3/8"W x 30 1/2"D x 2 3/4"H, Shpg. Wt. 3 lbs.

LLR 99550 *	Silver	<b>138.00-<del>EA</del></b>
-------------	--------	-----------------------------

**⚠ \*WARNING:** Cancer and Reproductive Harm – [www.P65Warnings.ca.gov](http://www.P65Warnings.ca.gov)



## B. Electric Desk Riser With Wireless Charging

- Features control panel and USB port
- Wireless charging pad
- Groove holds phone or tablet securely

Product No.	Color	LIST PRICE
33 1/2"W x 20"L x 5 7/8"-19 3/4"H		

LLR 99530	Black	<b>722.00-<del>EA</del></b>
-----------	-------	-----------------------------



## C. Electric Desk Riser With Keyboard Tray

- Adjust up and down with the push of a button from 5 1/4" to 17 1/8" off of the work surface
- Quick release, medical grade electric motor
- Low noise
- Anti-collision function will stop up/down motion if desk riser meets objects like coffee cups or bottles
- USB interface
- Covered by Lorell Limited 5-Year Warranty



Product No.	Color	LIST PRICE
28 3/4"W x 35 3/4"D x 6 1/2"H, Shpg. Wt. 60 lbs.		

LLR 99552	Black	<b>715.00-<del>EA</del></b>
-----------	-------	-----------------------------



## D. Desk Risers

- Go from sitting to standing with ease
- Stop at any position when adjusting height
- Double gas spring monitor lift
- Convenient iPad/iPhone slot
- Quick release keyboard tray
- Covered by Lorell Limited 5-Year Warranty



Product No.	Color	LIST PRICE
26 1/2"W x 38 1/2"D x 9 1/4"H, Shpg. Wt. 56 lbs.		

LLR 99553	Black	<b>488.00-<del>EA</del></b>
LLR 99554	White	



# ACTIVE OFFICE - SIT-TO-STAND WORKSTATIONS



## A. XL Adjustable Desk Riser

- Full desk size 46"W x 23½" D top panel and retractable 25½" x 11" keyboard tray
- Rises to 20" and lowers to 5"
- Straight up and down motion
- Includes grommet hole for mounting single, double, or triple monitor arm, or for running cables
- Holds up to three monitors, a laptop and more.
- 45 lb. capacity
- 46"W x 23½"D x 20"H
- Covered by Lorell Limited 5-Year Warranty



Product No.	Color	LIST PRICE
Desk Riser		
LLR 82013	Black	637.00 EA
Desk Riser Floor Stand: Adjustable, 38"H - 46"H		
LLR 82015	Black	259.00 EA



## B. Deluxe Adjustable Desk Riser

- New improved desk riser lifts up to 20" and lowers down to 5"
- 38" wide top can hold up to two monitors and a laptop
- Straight up and down motion minimizes required table depth (23")
- Ergonomic retractable keyboard tray 25¼" x 9¼" also holds most laptops
- Grommet hole allows you to route cables or install a monitor arm
- Fully assembled
- 33 lb. capacity
- 38"W x 23½"D x 20"H
- Covered by Lorell Limited 5-Year Warranty



Product No.	Color	LIST PRICE
LLR 99759	Black	602.00 EA
⚠ WARNING: Cancer and Reproductive Harm – www.P65Warnings.ca.gov		



## C. Adjustable Desk Riser Plus

- New improved desk riser lifts up to 18" and lowers down to 5"
- 32" top can hold up to two monitors or laptops
- Straight up and down motion minimizes required table depth (23")
- Ergonomic retractable keyboard tray 21½" x 9¼" also holds most laptops
- Grommet hole to route cables or install a monitor arm
- Fully assembled
- 33 lb. capacity
- 32"W x 24"D x 18"H
- Covered by Lorell Limited 5-Year Warranty



Product No.	Color	LIST PRICE
LLR 99983	Black	552.00 EA
⚠ WARNING: Cancer and Reproductive Harm – www.P65Warnings.ca.gov		

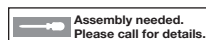


## D. Adjustable Desk Riser

- Rises up to 16½" and lowers down to 6½", to optimize the ergonomic work position for people of all heights
- 32" wide top can hold a monitor and a laptop
- Ergonomic retractable keyboard tray 24" x 11¼" also holds most laptops
- 33 lb. capacity
- 32"W x 25"D x 16"H
- Covered by Lorell Limited 5-Year Warranty



Product No.	Color	LIST PRICE
LLR 81974	Black	467.00 EA
⚠ WARNING: Cancer and Reproductive Harm – www.P65Warnings.ca.gov		



‡Cannot be shipped UP

www.lorellfurniture.com | ML



## ACTIVE OFFICE - SIT-TO-STAND WORKSTATIONS



### A. Cantilever Desk Riser

- Easy adjust single lever control with infinite locking positions between 5-16" and gas spring assist
- 22 lb. worksurface capacity and 5 lb. keyboard tray capacity
- 25¼"W x 18"D x 5"-16"H
- Covered by Lorell Limited 5-Year Warranty



Product No.	Color	LIST PRICE
LLR 99540	Black	<b>286.00 EA</b>



### B. X-Type Slim Desk Riser

- Super slim design
- Large worksurface, suitable for one monitor and one laptop, 33 lb. capacity
- Keyboard tray, 5 lb. capacity
- Easy adjust single lever control with infinite locking positions between 5"-16½"
- Gas spring assist
- 30"W x 32"D x 5"-16½"H
- Covered by Lorell Limited 5-Year Warranty



Product No.	Color	LIST PRICE
LLR 99539	Black	<b>314.00 EA</b>



### C. Corner Desk Riser

- Optimize space on a corner desk or in a cubicle with this adjustable desk riser
- Lifts up to 18" and lowers down to 5", to optimize the ergonomic work position for people of all heights
- 46" wide top can hold up to two monitors and a laptop
- Keyboard tray, 40" x 11"
- 45 lb. capacity
- Grommet hole to mount a monitor arm or run cables
- 46"W x 32"D x 18"H
- Covered by Lorell Limited 5-Year Warranty



Product No.	Color	LIST PRICE
LLR 82014	Black	<b>642.00 EA</b>

# ACTIVE OFFICE - SIT-TO-STAND WORKSTATIONS



**LORELL®**

## A. 28" Wide Sit-To-Stand School Desk

- Desk uses a gas piston to easily adjust from sitting to standing position
- Easy height adjustment handle allows raising or lowering from 24" to 40"
- Includes lockable casters
- Optional book box fits under top of desk to provide students storage for books and supplies

Product No.	Color	LIST PRICE
Sit-To-Stand Student Desk: 28"W x 20"L x 40"H		
LLR 00076	Black Oak	<del>725.00</del> EA
Book Box: 23"W x 11"L x 7"H		
LLR 00077	Black	<del>115.00</del> EA



## B. Portable Desk Riser

- Folds down to less than 1" thick
- Fits into your backpack for true mobility
- Easy gas piston height adjustment up to 15"
- 19" x 10" worksurface
- 19"W x 10"L x 1"H (when folded)
- Carry bag included

Product No.	Color	LIST PRICE
LLR 00078	Silver	<del>219.00</del> EA



## C. 30" Monitor Stand

- Lift monitor height
- Includes four UL approved AC outlets and two USB charging ports
- 10' power cord
- 30"W x 9"L x 4¾"H
- Desk riser sold separately

Product No.	Color	LIST PRICE
LLR 00079	Black	<del>190.00</del> EA



Black

## D. Active Perches

- Active seating with square, black nylon base
- Auto return gas lift seat
- Adjustable-height seat plate
- Fabric upholstery
- 16½"W x 15¾"D x 26¾"-36"H
- Shpg. Wt. 17 lbs
- Covered by Lorell Limited 5-Year Warranty



Product No.	Color	LIST PRICE
LLR 42168	Black	<del>326.00</del> EA



Durable 3 layer memory foam construction

## E. Energizing Desk Mat

- Comfortably stand at your desk
- Durable anti-fatigue three-layer memory foam construction reduces stress on feet, knees and ankles
- Perfect size sits under desk while sitting
- 30"W x 20"L x ¾"H
- Shpg. Wt. 3 lbs.
- Covered by Lorell Limited 5-Year Warranty



Product No.	Color	LIST PRICE
LLR 99985	Black	<del>103.00</del> EA

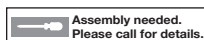


## F. Active Antifatigue Mat

- Two massage areas for blood circulation and muscle engagement
- Made from 100% polyurethane with a durable integral pebbled skin
- 26¾"W x 21¾"D x 2¾"H
- Covered by Lorell Limited 5-Year Warranty



Product No.	Color	LIST PRICE
LLR 99537	Black	<del>163.00</del> EA



Assembly needed. Please call for details.

‡Cannot be shipped UP

www.lorellfurniture.com | ML